

Zeugma

Monoplace Hyperbaric Chamber



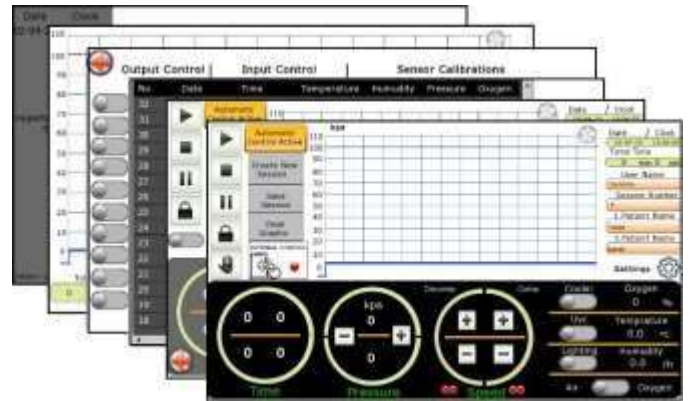
Maximum Patient Comfort

- 166 cm Internal Diameter – the largest and longest aluminium body with acrylic window in its class
- Interior faux leather upholstery. Comfortable leather seat and footrest. Seat width 50 cm, depth 45 cm dimensions.
- Accommodates two up to 350kg weight, 1420mm length.
- Cool and quiet treatment compartment
- Optional entertainment system for patient enjoyment

Highest Level of Reliability & Safety patients

- A company that provides monoplace and multiplace production, installation and service,
- The ability to hear, see and monitor the patient during treatment
- Superior electronic voice communications system to insure safe, uninterrupted communication with patients
- Automatic emergency operation. In an emergency, chamber automation takes the patients inside the chamber safely out of the chamber.
- Pressure balancing by automation and manual system in case of sudden pressure rise.
- Control panel and chamber covers are detachable. In order to enter the chamber through narrow passages, the control panel and feet are removed.

Most Cost Effective



- Optional Accessories to build the chamber that meets your usage and budgetary requirements
- The chamber can be divided into two parts in order to be able to assemble the product in narrow doors and places where settlement difficulties may occur.
- Hyperbaric software automatically performs all session operations. All controls are done via the tablet PC on the chamber. The entire session can be controlled and monitored from within the chamber.
- With the remote connection feature, our professional team can control everything for you through the program, in case of any help request.



Zeugma

Monoplace Hyperbaric Chamber

Equipment	Specifications	Equipment	Specifications
Compressor	270 LPM flow / 65 Db Sound level	Seats	125 cm x 117 cm dimension / Covered with artificial flame retardant leather, with soft sponge
Control Panel	<ul style="list-style-type: none"> • Intercom • Touchpad PC • Emergency stop button • Pressure level adjustment • Microphone 	Led Light	RGB 12 different color options. Light intensity adjustable
		Window	20mm PMMA acrylic
Automation System	<ul style="list-style-type: none"> • Personalized session recording • Automatic session setup • Manual session setup • Pressure level adjustment • Pressure speed adjustment • Setting session time • Pressure time graph indicator • Lighting setting • UVC sterilization on/off • Refrigerator on / off • data logger • Pressure, temperature, humidity, oxygen sensor information and calibration • Door locking • Oxygen/Air Selection valve 	Chiller	<ul style="list-style-type: none"> • Electricity: 220 V/ 50 Hz Current: 2.4~3.1A • Refrigerant power: 0.52KW - 0.71HP • Cooling capacity: 5084Btu/h - 1.49KW • Refrigerant: R-22
		BIBS Regulator	<ul style="list-style-type: none"> • Stainless steel body • 80mbar oxygen/air supply • Overboard dumping • Closed system breathing • Safe breathing
		UVC	Sterilization with light
		Sensors	Oxygen, Temperature, Humidity, Pressure
		Intercom	<ul style="list-style-type: none"> • Dual channel communication system • Push to talk • Indoor and outdoor volume adjustment
Door	<ul style="list-style-type: none"> • 20mm PMMA clear acrylic viewport • Aluminum door • Hinged door system 	Pneumatic	<ul style="list-style-type: none"> • Independent valves for compression and decompression • Valve flow adjustment • Independent pneumatic box • Door lock valve • Oxygen / air selection valve • Independent Plot air tube
Entertainment System	Smart TV.(optional)		

Specifications	
Capacity	1 person
Width	185 cm
Length	142 cm
Height	1860 cm
Internal Diameter	166 cm
Weight	350 kg
Max Op. Pressure	2 ATA
Design Temperature	0° TO 38° C
O2 Supply Pressure	4 bar
Ventilation Rate	125 LPM
Emergency Depress Rate	2 ATA to 1 ATA in 90 sec